

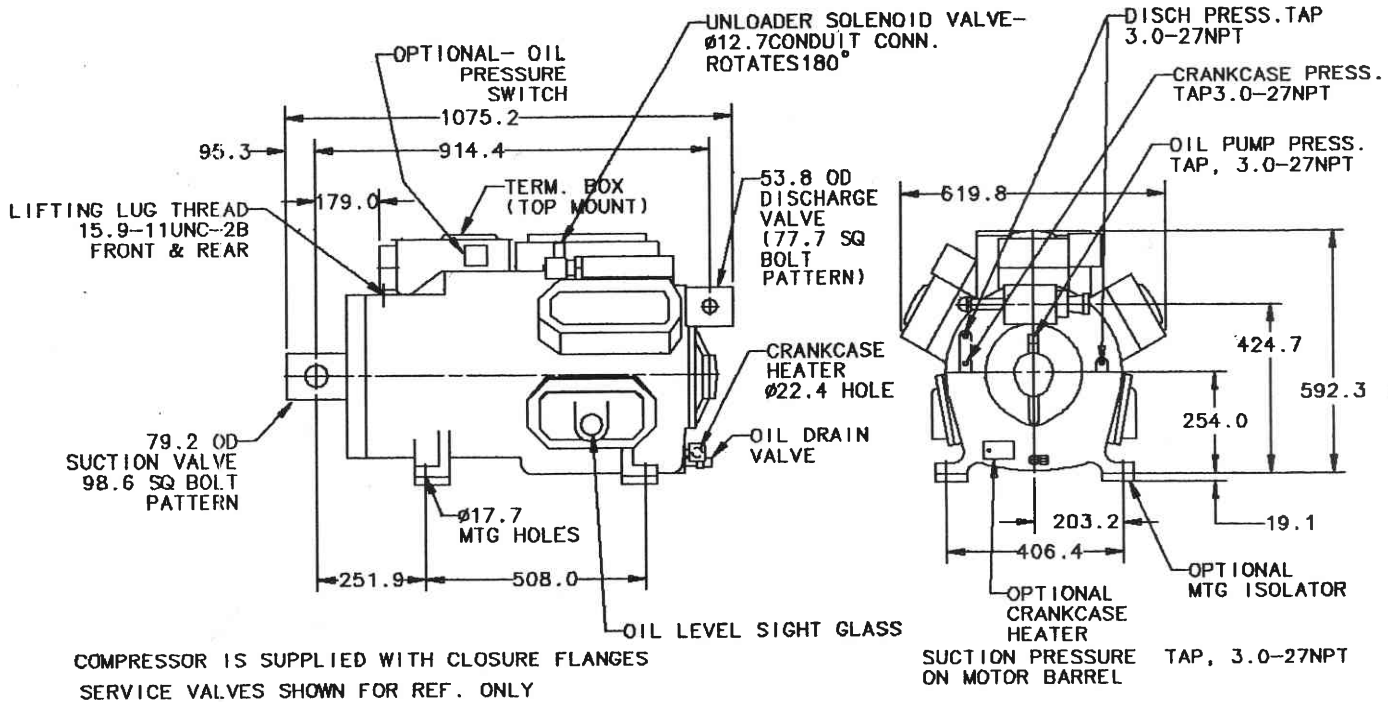


Positive Displacement Data
R Compressor
 Model CRHR-600
 60 Ton/R-22/50 Hz

Submittal No. CRHR-SU-D008A

Order No. COM-X-264

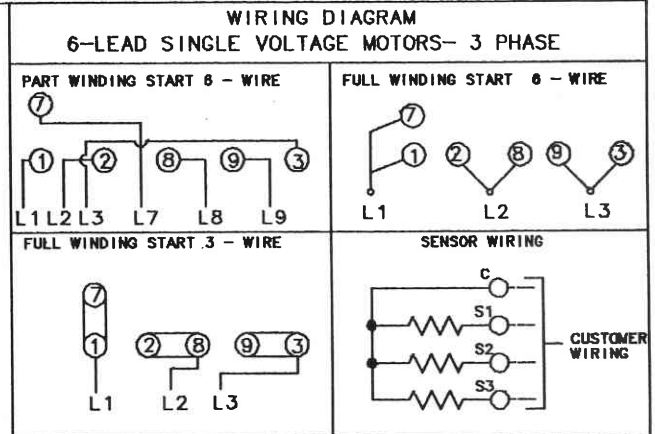
Date: September 1989



APPLICATION
 EVAP TEMP RANGE SEE CAPACITY CURVE
 INTERNAL RELIEF VALVE SETTING 26.5 BAR
 REFRIGERANT R22 & R502
 U.L. RECOGNIZED AND CSA ACCEPTED

RATED PERFORMANCE	33*	67*	100*
CAPACITY (KW) (R-22)	61.7	123.4	187.0
POWER INPUT (KW)	28.8	41.8	55.2
CURRENT (400V) (AMPS)	55.1	74.1	93.0
C.O.P.	2.15	2.94	3.39
EVAPORATOR TEMP (°C)	7.22	7.22	7.22
CONDENSER TEMP (°C)	54.44	54.44	54.44
LIQUID TEMP (°C)	8.33	8.33	8.33
SUPERHEAT (°C)	11.11	11.11	11.11

(45F/130/15F SC/20F SH-ARI)



PHYSICAL DATA

BORE (MM)	87.50
STROKE (MM)	69.85
NO OF CYLINDER	6
SPEED (RPM)	1450
DISPLACEMENT (CMM)	3.65
WEIGHT (KG)	513
OIL CHARGE (LITERS)	12.8
PAINT COLOR	BEIGE

MOTOR PROTECTION

TYPE (PILOT DUTY)	INTERNAL THERMOSTAT
MANUFACTURER	ROBERTSHAW
EXTERNAL OVERCURRENT PROTECTION REQUIRED	

MOTOR DATA

VOLTAGE	UTILIZATION RANGE	MAX LOAD AIRCOOLED	CURRENT (AMPS) ± WATERCOOLED **	LRA
200-60-3	180-220	316	280	990
230-60-3	208-254	275	252	860
460-60-3	416-508	138	126	430
575-60-3	520-635	110	101	346
200-50-3	180-220	275	252	825
230-50-3	198-264	239	220	720
363-50-3	327-399	152	139	455
400-50-3	343-456	138	126	430

CRANKCASE HEATER
 IMMERSION TYPE, RATING - 140 WATTS, 120 OR 240 VOLTS

OIL PRESSURE SWITCH
 DIFFERENTIAL TYPE, PILOT DUTY, 24 VAC CONTACTS

± AT MINIMUM UTILIZATION VOLTAGE AT 10C
 * SAT. SUCTION . 65.5C SAT. CONDENSING,
 8.3C SUPERHEAT , FULL LOAD
 ** AT 4.4C SAT. SUCTION, 51.7C SAT. CONDENSING,
 8.3C SUPERHEAT , FULL LOAD

TRANE

MODEL: CRHR-600

R- 22

CAPACITY AT VARIOUS SATURATED CONDENSING TEMPERATURES

60 TON MODEL R 50HZ 100% LOAD

